



The Brentwood II

Imagery Homes is proud to offer the Brentwood II, a stunning two-story home with 3,818 square feet of distinctive living space complemented with exceptional finishes.

You are welcomed through an impressive two-story foyer. Just off the foyer is an elegant dining room with a coffered ceiling and crown molding. French doors open up into a den with a ten foot cross-beamed ceiling and crown molding. The expansive two-story great room has a large gas fireplace and built-in maple cabinetry.

The kitchen and dinette feature maple raised panel cabinets with crown molding, wraparound snack bar, work island with vegetable sink, large walk-in pantry, granite countertops, and built-in appliances. Located off the kitchen is a spacious sun room with a ceiling fan, cathedral ceiling, and floor to ceiling windows.

The master bedroom has a 12' tray ceiling and his & her walk-in closets with built-in shelving. The luxurious master bath has a whirlpool tub, oversized tile shower with glass door, his & her vanities with a built-in towel cabinet, quartz countertops, and ceramic tile flooring with a radiant floor warming system. Three additional spacious bedrooms can be found on the second floor, which have cathedral ceilings and large windows.

The utility room contains a built-in sink and maple raised panel cabinets for added storage. The mud room is conveniently located off the garage and includes a large coat closet, storage lockers, and ceramic tile flooring.

Imagery Homes is dedicated to providing its customers with distinctive high quality homes. This is evident with the exceptional finishes and quality construction that can be found in the Brentwood II.

Imagery Homes, LLC
1105 Michael Drive, Brookfield, Wisconsin 53045
Phone: 262-370-7121 Fax: 262-796-8029
Or Visit Us On The Web: www.imageryhomes.com

Features Included in the Brentwood II:

Foyer

- Wood front entry door with glass sidelights
- Full view aluminum combination door

Formal Dining

- 9' Coffered ceiling
- Crown molding & hardwood floors

Kitchen/Dinette

- Raised panel maple cabinets with roll-out shelves
- Granite countertops with Stainless Steel Kohler™ sink
- Island with vegetable sink
- Walk-in pantry
- Built-in stainless steel appliances

Master Bedroom Suite

- 10' ceilings
- His & her walk-in closet with built-in shelving
- Kohler™ whirlpool tub
- Large oversized tile shower with dual shower heads
- His & her vanity cabinets (34 ½" high)
- Ceramic tile floor with radiant warming system

Great Room

- Two story ceiling
- Large windows with transom
- Gas fireplace with tile face and wood surround
- Built-in cabinetry

Den

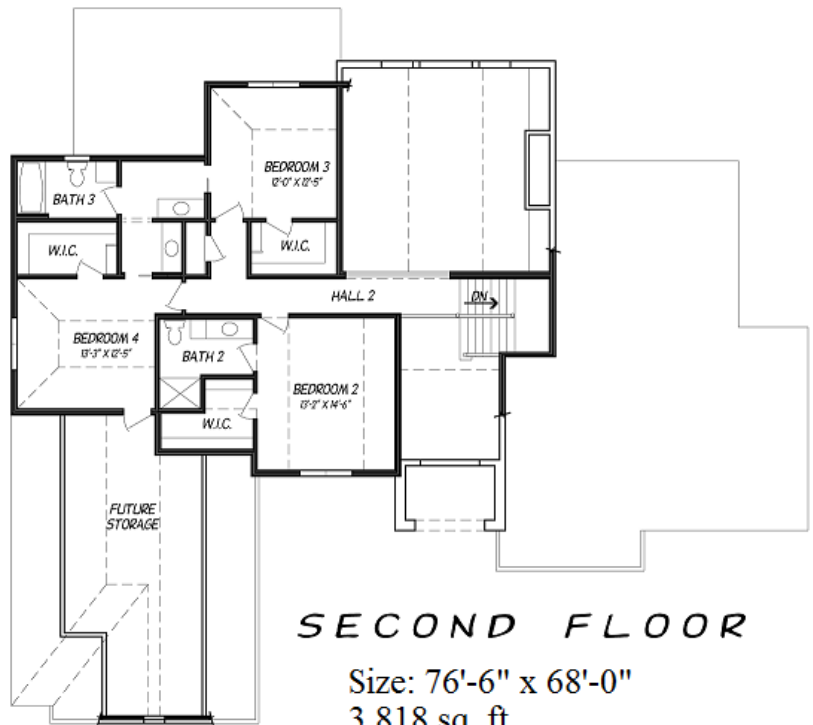
- Glass French doors
- 10' Ceilings
- Crown Molding

Additional Standard Features:

- Full basement, 9' poured concrete foundation walls with drain tile and sump pump
- TJI silent floor joist, Weyerhaeuser Structurwood Gold™ tongue and groove one piece floor system, glued, nailed, and screwed down
- 2 x 6 exterior walls 16" on center
- Tyvek™ Homewrap with taped seams
- Insulation: R-5 foundation, R-21 walls (Corbond® Foam), R-50 attic
- Energy efficient Anderson™ 400 series casement windows and patio doors with internal grilles
- Exterior: Brick and cedar siding with cedar wrapped windows and corner boards
- Elk™ 30 year dimensional high-profile roofing shingle
- Exterior and interior staining
- Four panel interior door
- 3 ½" casing and 5 ¼" base molding
- Hardwood flooring in foyer, dining room, kitchen, & dinette.
- Kohler™ kitchen sink and toilets
- Moen™ faucets
- Insinkerator™ garbage disposal
- Drywall texture applied to all interior walls
- Interior walls and ceilings primed and painted
- Insulated steel panel carriage house garage doors with opener (keyless entry included)
- Garage finished with insulation and drywall on ceiling and walls
- Pre-finished 4" aluminum gutters and downspouts
- Phone jacks in kitchen, den and all bedrooms
- Cable jacks in great room, den and all bedrooms
- 320 Amp electric service



FIRST FLOOR



SECOND FLOOR

Size: 76'-6" x 68'-0"
3,818 sq. ft.

- Two 65 gallon gas water heaters
- Bathroom tops: solid surface
- Tub/Shower: cast iron w/tile surround
- Exhaust fans in all bathrooms
- Carrier™ high efficiency forced air furnace and central air conditioning
- Three exterior hose bibs
- Mirrors above all vanities
- Schlage™ door hardware
- Bathroom towel bars and holders
- Site clean-up and final cleaning

Additional Included Items:

- Full bath rough plumbing in basement
- Desirable ½ acre lot in the heart of Brookfield on a quiet cul-de-sac.

Price: **\$784,000***

* Plus Lot Improvements

Address: 18700 Woodberry Court - Brookfield

Rev. 12/08